

In 2010 we proved how to
USE OXYGEN TO DISPOSE WASTE



In 2016 we prove how to
GENERATE ENERGY FROM WASTE



REWRITES HISTORY

2010

THREE QUESTIONS

- ▼ Why add fuel to burn waste?
- ▼ Why not use the waste material itself as the fuel?
- ▼ Why not dispose grabage without spoiling the eco-system?

ONE ANSWER



THREE PRINCIPLES

- ▼ The presence of Oxygen makes the Earth unique.
- ▼ The proper, propelled flow of Oxygen makes Nowaste unique.
- ▼ The use of Oxygen as fuel solves all issues of conventional incinerators.

CHEMISTRY

- ▼ CORT incinerates solid waste adhering to relevant emission standards.
- ▼ The two-layer insulation prevents thermal radiation.
- ▼ The residue is pure white ash which has various commercial utilities.

ECONOMICS

- ▼ No Expense@ Fuel.
- ▼ No Expense@ Maintenance.
- ▼ No Recurring/ Replacement/Repair Costs

HISTORY

- ▼ **STEEL TCH**® began commercial installation in April 2012.
- ▼ By July 2016, 1600 plus successful establishments in South India.
- ▼ Official invitation from Malaysia, Bahrain and Qatar.

2016

THREE QUESTIONS

- ▼ Why can't we use waste as wealth?
- ▼ Why not use the waste material as a source of energy?
- ▼ Why can't we do waste disposal the sustainable way?

ONE ANSWER



THREE PRINCIPLES

- ▼ Energy management begins on realising how, when and where energy is used.
- ▼ Energy engineering in harmony with nature is what the contemporary world demands.
- ▼ Simple methods bring best results in energy conversion practices.


CHEMISTRY

- ▼ Heat generated during incineration is a reliable source of energy.
- ▼ Heat energy can be effectively converted into other forms.(like steam/electricity)
- ▼ Heat thus converted is an alternate, reliable form of energy .

ECONOMICS

- ▼ Better ROI on incinerator installation
- ▼ Lesser burden@ electricity charges
- ▼ Instead of incurring 'expense' waste generates 'income'.

FUTURE

Kerala State Pollution Control Board approved laboratory certifies  The no fuel solid waste management system

Parameters	NOWASTE Result	KSPCB Limit
Particulate Matter	36 mg/NM3	150 mg/NM3
Sulphur Dioxide	78 mg/NM3	1200 mg/NM3
Nitrogen Oxides	32.6 mg/NM3	450 mg/NM3
*Hydrochloric Acid	9.80 mg/NM3	50 mg/NM3

*CPCB

WHY NOWASTE?



▼ ORIGINAL PATENTED TECHNOLOGY

«**nowaste**» is manufactured on the basis of the technological invention by our Managing Director, Dr. Kabeersha under the name and style CORT (Controlled Oxygen Rotating Technology) patented by the Copyright Office, Govt. of India. Vide No: L-48657/2013 Dated 30-04-2013.

▼ INTERNATIONAL CERTIFICATION

«**nowaste**» is manufactured by Steeltech CORT Solution (P) Ltd, an ISO 14001: 2015 & ISO 9001: 2015 certified company with advanced infrastructure and 100 plus engineers and experts working under the MD's master brain.



WHY NOWASTE?

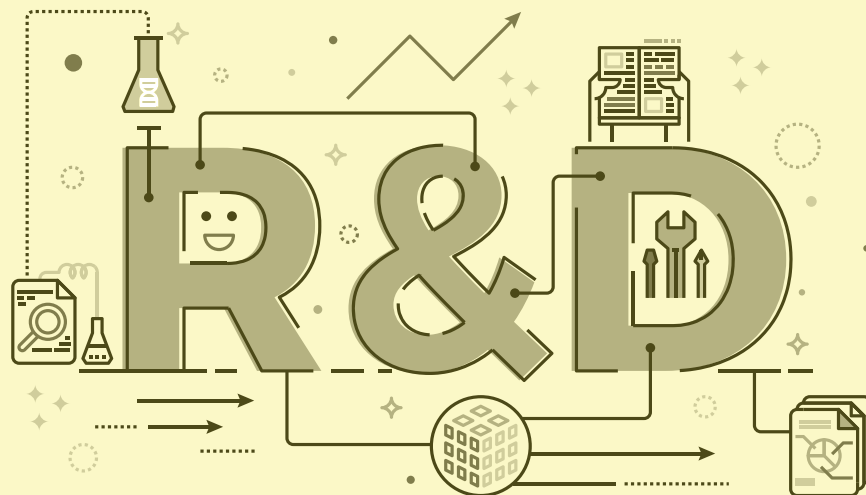


▼ CUSTOMIZED, INNOVATIVE DESIGNS

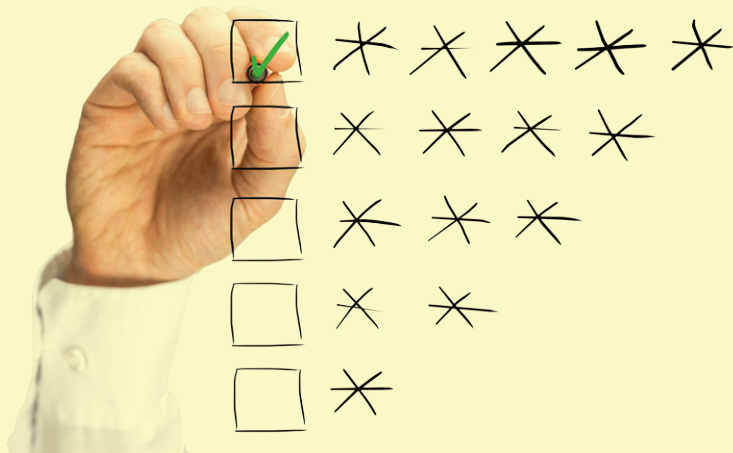
Your business is different; your requirement is different and we know it better than anyone. **nowaste** range of solid waste disposal systems is custom-built according to your specific requirements. The service involves installation, commissioning, servicing and training with onsite support. Comprehensive maintenance (both Preventive and corrective) through routine checkups is our USP.

▼ RIGOROUS RESEARCH & DEVELOPMENT

We have a team of gifted industrial scientists tasked with applied research in technological fields to facilitate product development. They implement and study efficacy and worthiness, theorize, explore, clarify, design, develop, synthesize and test innovative ideas to make Nowaste a total fuel free and environmental solution for waste management. Air pollution Control device, steam and hot water boiler attachment, and residue management systems are some among the contributions of our R&D department.



WHY NOWASTE LEADS?



▼ PRECISE QUALITY CONTROL

Transparency is the key word for **nowaste**. We use the precise material for manufacturing each unit. The specification and measurement of each component is inscribed in estimate can be evaluated at any stage of installation. We use only corrosion free steel pipes with high thermal resistivity and long life, premium quality refractory and other thermal insulations. Strict adherence to quality enables us offer onsite replacement warranty for two years.

▼ EXCLUSIVE SUPPLY, ERECTION & HANDLING:

Each unit is installed only after thorough assessment of the site and its surroundings. The variables include nature and volume of waste, climatic aspects, elevation of the building and adjacent buildings etc. We have skilled experts and sophisticated erection machineries following standard safety procedures. With own logistics system, the company directly manages Supply, Erection and Handling anywhere in India.



WHY NOWASTE LEADS?



▼ TALL REPUTATION AND CREDIBILITY

Figures speak well here. Nowaste began commercial production in 2011 and within 05 years the installations across India crossed 2000. At an average, once in 36 hours, **STEEL TECH**® installs a **«nowaste»**®. Clients include Public sector establishments LSGs, Medical Colleges and Hospitals, Indian Railway, KTDC, KTDFC, TNPL, PRESS CLUB, and private sector establishments like Hospitals, Industries, Apartments, Educational Institutions and individual houses.

▼ RELIABLE SERVICES & WARRANTY:

Every NOWASTE unit is supplied with 2-year onsite replacement warranty.

The following services are provided as part of the warranty package.

- Training to your staff for proper operation of the equipment.
 - Preventive and corrective onsite maintenance from the date of installation.
 - Routine check up and maintenance free of cost.
 - Emergency support within 48 hours through regional offices at Trivandrum, Kollam, Kottayam, Cochin, Malappuram, Calicut and Kannur.
 - Replacement of damaged spares free of cost.
 - AMC facility subsequent to warranty expiry.
-

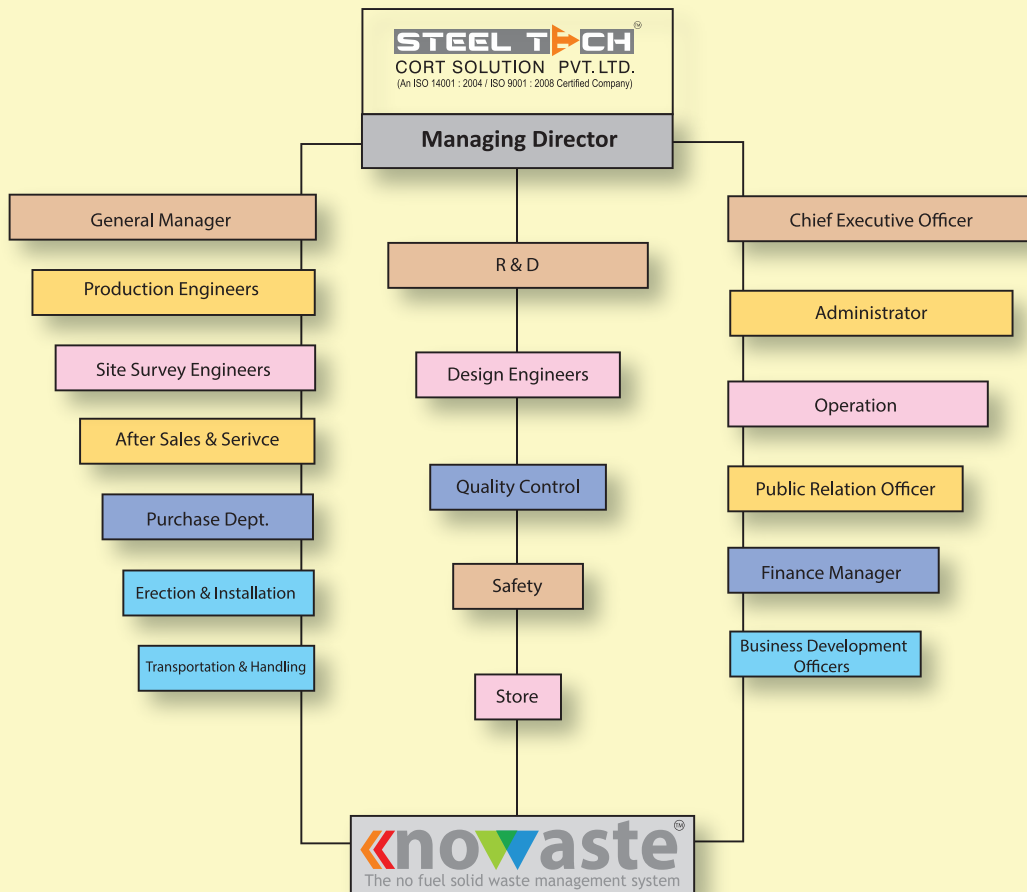
CLIENTELE





▼ AN ALL EQUIPPED CREW.

We, at **STEEL TECH**® follow an internationally proven protocol in Research, Development, Installation and Maintenance of **«nowaste»** with the following personnel organized the best functional pattern.





▼ AN ALL INSPIRING CAPTAIN.

Dr. KABEERSHA, the brain and inspiring force behind **STEEL TECH**® and **«novaste»** began his 04 decade long exceptional career with REACTOR RESEARCH CENTRE, KALPAKKAM and from there to VOEST-ALPINE MONTAGE GES MBH @ JORDAN, B NERORA ATOMIC POWER PROJECT, ALMARAI CO. KSA and then GULF PIPING CO. DUBAI. Dr. KABEERSHA instituted STEELTECH in 2011 to further his research into metallurgy, thermodynamics and its practical and pragmatic implementation. Controlled Oxygen Rotation System (CORT) was invented by Dr. Sha in 2010 which brought in a comprehensive change in the dynamics of waste disposal.



Committed for Brighter Days Ahead



Administrative Office.

1306, Hi Lite Business Park, Hi Lite City, Calicut, Kerala, Pin-673014 | Ph: 0495 319 88 85,
+91 8589 89 76 76, +91 8589 09 76 76

Factory:

Link Road, Chaliparamba, Malappuram Dt., Kerala-673634
Ph: 0483 2890082, +91 9946 44 73 72

Corporate Offices :

JRA/04 A, Janatha Jn., Manjummal, Edappally, Kerala. Ph: +91 8589 81 76 76
GV/26, Green Valley, Plamude, Kowadiar P.O., Thiruvananthapuram, Kerala Ph: +91 8589 94 75 75
MKM Complex, Kodimatha, MC Road, Kottayam, Ph: +91 8281 60 11 61

info@nowaste.in | www.nowaste.in



After Sales - Service & Maintenance (24X7) : 8589 90 76 76